

Facklamia* sp., Strain HGF4*Catalog No. HM-289****Product Description:** *Facklamia* sp., strain HGF4 is a human gastrointestinal isolate.**Lot^{1,2}: 62072070****Manufacturing Date: 28OCT2013**

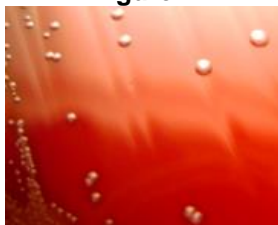
TEST	SPECIFICATIONS	RESULTS
Phenotypic Analysis Cellular morphology Colony morphology ³ Motility (wet mount)	Gram-positive cocci Report results Non-motile	Gram-positive cocci Circular, flat, entire, smooth and gray (Figure 1) Non-motile
Genotypic Analysis Sequencing of 16S ribosomal RNA gene (~ 1490 base pairs)	≥ 99% identical to depositor's sequence Consistent with <i>Facklamia</i> sp.	≥ 99% identical to depositor's sequence Consistent with <i>Facklamia</i> sp. ⁴
Viability (post-freeze)³	Growth	Growth

¹Quality control of HMP material is only performed to demonstrate that the material distributed by BEI Resources is identical to the deposited material. It should not be considered a complete characterization of the deposited organism.

²*Facklamia* sp., strain HGF4 was deposited by Thomas M. Schmidt, Professor, Department of Microbiology and Molecular Genetics, Michigan State University, East Lansing, Michigan, USA. HM-289 was produced by inoculation of the deposited material into Brain Heart Infusion broth and incubated on Tryptic Soy agar with 5% defibrinated sheep blood for 173 hours at 37°C in an aerobic atmosphere. The growth was then suspended in Brain Heart Infusion broth and added to Tryptic Soy agar with 5% defibrinated sheep blood kolles which were grown 166 hours at 37°C in an aerobic atmosphere to produce this lot. Purity of this lot was assessed for 7 days under propagation conditions.

³73 hours at 37°C in an aerobic atmosphere on Tryptic Soy agar with 5% defibrinated sheep blood

⁴The depositor's sequence length is ~650 base pairs.

Figure 1**Date:** 20 MAY 2014**Signature:****Title:**

Technical Manager, BEI Authentication or designee

ATCC®, on behalf of BEI Resources, hereby represents and warrants that the material provided under this certificate has been subjected to the tests and procedures specified and that the results described, along with any other data provided in this certificate, are true and accurate to the best of ATCC®'s knowledge.

ATCC® is a trademark of the American Type Culture Collection.

You are authorized to use this product for research use only. It is not intended for human use.

